



# SPECTRE TWIN

HALO

## IP Rated LED Vapour Proof Twin Luminaire



SAA

UK  
CA



\*All products must be registered at [haloinnovation.co.uk](http://haloinnovation.co.uk) to qualify for warranty

# HALO

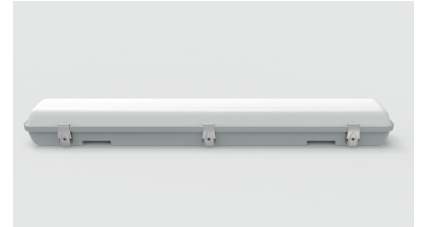
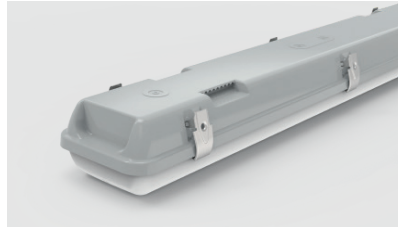
## SPECTRE TWIN

### FEATURES

- / IP65 waterproof / Dust proof / IK08
- / Tridonic Driver
- / LED driver on tray for easy replacement
- / Multiple Link with double wiring
- / High technology SMD2835 as light source
- / 5 year warranty\*
- / LSF Wiring

### OPTIONS

- / Dimming: ON-OFF / 1-10V / DALI / MS / EM 3W3H
- / Emergency



### APPLICATIONS



1



2



3



4

**Commercial & Industrial applications including:**

- 1\ Sports facilities, Outdoor & Indoor locations
- 2\ Car Parks & Garages
- 3\ Commercial Buildings and Offices
- 4\ Replacement for fluorescent NCF

\*All products must be registered at [haloinnovation.co.uk](http://haloinnovation.co.uk) to qualify for warranty

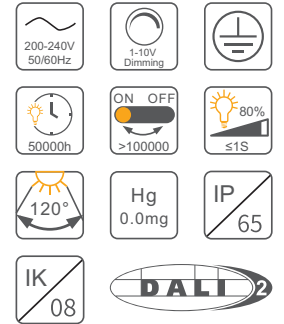
## DATA SHEET

Part No	Description	LED Qty	Lumen Efficacy (Lm/w)	Luminous Flux (LM)
<b>SPECTRE TWIN</b>				
<b>STR04-40-T-001</b>	Spectre 40W Vapour proof fitting - <b>4 foot twin</b>	312	125	4375
<b>STR05-55-T-001</b>	Spectre 55W Vapour proof fitting - <b>5 foot twin</b>	364	125	6875
<b>STR06-70-T-001</b>	Spectre 70W Vapour proof fitting - <b>6 foot twin</b>	364	125	9375
<b>SPECTRE TWIN + EMERGENCY</b>				
<b>STR04-40-T-001-EM</b>	Spectre 40W Vapour proof fitting - <b>4 foot twin + Emergency</b>	312	125	4375
<b>STR05-55-T-001-EM</b>	Spectre 55W Vapour proof fitting - <b>5 foot twin + Emergency</b>	364	125	6875
<b>STR06-70-T-001-EM</b>	Spectre 70W Vapour proof fitting - <b>6 foot twin + Emergency</b>	364	125	9375

## TECHNICAL SPECIFICATIONS

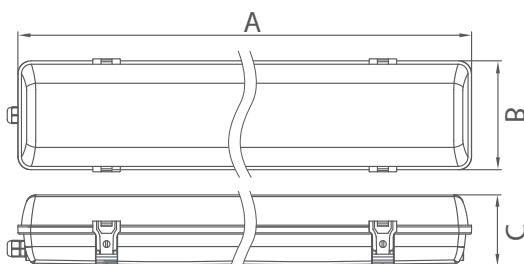
<b>Colour Index</b>	Ra>80, R9>0
<b>Beam Angle</b>	120°
<b>Protection Class</b>	IP65 / IK08
<b>Colour Temp.</b>	Tri-Colour (CCT): 3000/5000K Mixed: 4000K
<b>Dimming Function</b>	On-Off / 1-10V Dimming / Microwave Sensor
<b>LED Current</b>	Constant 45mA
<b>Input Voltage</b>	AC200-240V/50Hz
<b>Working Voltage</b>	Constant DC36-42V
<b>Housing Material</b>	Full Plastic
<b>Temperature</b>	Operation: -15° to 50°C Storage: -25° to 55°C
<b>Colour Consistency in level</b>	Max. 6SDCM

<b>THD</b>	<15%
<b>Power Factor</b>	>0.95
<b>Efficiency in</b>	>93%
<b>Energy Efficiency Class</b>	A+ / A++
<b>Standard Deviation of Colour Matching</b>	<5
<b>Starting Time</b>	<0.55
<b>Warm-up Time to 60%</b>	<0.55
<b>Rated Nominal Lifetime</b>	>50,000 hours
<b>Lumen Maintenance at e.o.l.</b>	>80%
<b>LED Device Lifetime</b>	L80/B10@50,000 hours
<b>Switching Cycle before Failure</b>	>100,000 times
<b>Warranty</b>	5 years



## DIMENSIONS

Model	A (mm)	B (mm)	C (mm)
<b>120cm / 4ft</b>	1280	115	72
<b>150cm / 5ft</b>	1580	115	72
<b>180cm / 6ft</b>	1880	115	72



## PHOTOMETRY CURVE

