

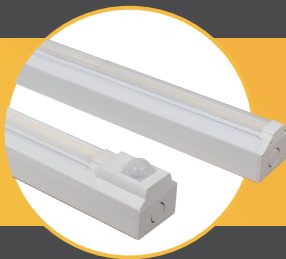


HALO

haloinnovation.co.uk



SPECTRE



SOLACE



THUNDERBALL



SKYFALL



MOONRAKER

Welcome to the NEW

HALO

LIGHTING RANGE!



HALO is Leading the Revolution of Energy Efficient Luminaires.

HALO offers premium LED innovation throughout its entire product range. Emphasising sustainability, performance, and reliability.

Reliable Products, Reliable Service

When you choose HALO, you're choosing a manufacturer that's respected for dedication to safety and reliability. That's why HALO uses safer LSF wiring as standard throughout its entire product range. HALO offers a 5 year warranty for all products as standard. This is reinforced by a committed 5-year on-site warranty as well.

Stock availability and rapid delivery are key in providing quality service. HALO partners exclusively with distributors who are able to maintain large stock holdings. Partners are also chosen for their ability to handle high-volume orders, while still achieving fast delivery times. Such high standards have built a base of respected clients including London landmarks like:

- / The British Medical Association House
- / Twickenham Stadium
- / Marriott Hotels
- / Wembley Stadium

Uncompromising Quality

HALO takes pride in offering products with high standards of performance and construction. The range is assembled using only the most advanced testing and monitoring equipment available – including specialist environmental controls that maintain peak conditions on assembly lines. From receiving materials, through production, assembly, and final Q&A testing, every aspect is rigorously monitored to ensure perfection.

Innovating for Perfection

HALO is dedicated to continual improvement and innovation. We gather extensive feedback from customers, and invest in R&D to further improve and expand our product range.

As experts in respecifying products and providing energy-saving solutions, HALO keeps projects coming in under budget and above expectations. Follow us on social media to see further innovations and development at HALO.



Installed in:
Marriott Hotels, UK



Installed in:
Twickenham Stadium, UK



Installed in:
British Medical Association House, UK



Installed in:
Harlequins FC, Twickenham Stoop Stadium, UK



Installed in:
Multiple locations across London, UK



Installed in:
University of Southampton, UK



Installed in:
Wembley Football Stadium, UK

/ CONTENTS

SPECTRE SINGLE

p.06



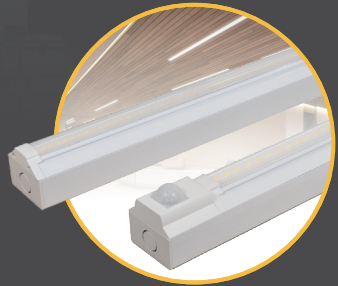
SPECTRE TWIN

p.09



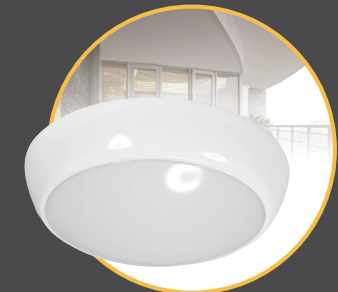
SOLACE

p.12



THUNDERBALL

p.15



SKYFALL

p.18



MOONRAKER

p.21



HALO

/ RANGE OVERVIEW

SPECTRE RANGE

Twin/Single Vapour proof luminaires

Spectre is designed to withstand corrosion, and illuminate a range of environments such as garages, stairwells, and storage facilities.

A one-piece shell, constructed with durability in mind. Spectre's offers a wider area of illumination thanks to its 120° beam angle. It also saves you from eye strain by using a glare reducing opaque finish.

To ensure you have ideal performance in any environment we have equipped our range for a variety of different situations. Optional variations include emergency lighting with backup power; microwave sensing; and easy to integrate DALI compatible drivers.

The Spectre range of Vapour Proof Luminaires is available in configurations at 4ft, 5ft, and 6ft length, in different lumen capacities. All complete with HALO's coveted quality pedigree and 5-year on-site warranty* as standard.



- / Safer LSF wiring as standard
- / Includes 5-year on-site warranty*
- / Control gear supplied by Tridonic, a brand leading supplier of LED drivers, gives you maximum responsiveness and fine control over the luminaire
- / High-durability IK08 rated polycarbonate/polystyrene casing. Rated for impact up to 5 Joules
- / Corrosion resistant and suitable for harsh environments
- / Customise for a variety of tasks with a range of optional variations

SOLACE RANGE

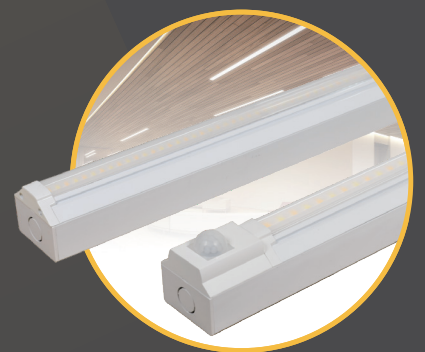
LED Batten

The Solace range of LED batten lighting is energy efficient, compact and comes in a sleek design.

Constructed from the best materials following HALO's rigorous QA measures. The Solace range of LED battens comes with LSF wiring as standard. Suitable for quick installation across all sectors, the Solace range can be wired from the rear or end of the device, and can be mounted on a surface, or suspended as required.

Our LED battens are available with optional variations to best suit a range of applications. These include DALI compatibility and PIR motion sensing. Plus a dimming feature at 1-10V that reduces running cost, and eye strain. Constructed from the best materials and following HALO's rigorous QA measures.

All complete with HALO's coveted quality pedigree and 5-year on-site warranty* as standard.



- / Safer LSF wiring as standard
- / Includes 5-year on-site warranty*
- / Modern, uncompromised LED liquid strip
- / Fast, flexible installs with multi-access wiring points, push-fit terminals, and retained luminaire
- / Customise for a variety of tasks with a range of optional variations

THUNDERBALL RANGE

2D LED Bulkhead

Thunderball represents a new pinnacle of performance for eco-friendly luminaires.

The 2D LED Bulkheads are built with modern life in mind and engineered using industry-leading technology and premium materials. Flexibility and customisation are key, so Thunderball bulkheads let you choose from a range of optional variations to suit any situation. These include an emergency lighting function with 3hrs battery life at 140LM; microwave sensing with 0% or 10% brightness; customisable Tri-colour (CCT) lighting ranging between 3000K and 5000K lumens; and DALI compatible control drivers.

Our range maintains HALO's high standards of quality by including LSF wiring and IP54 rated construction. Thunderball provides you with long-term performance regardless of the environment, with a lifespan of up to 50,000 work-hours; tested in conditions ranging from -15°C up to 50°C. Complete with HALO's coveted quality pedigree and 5-year on-site warranty* as standard.



- / Customise for a variety of tasks with a range of optional variations
- / LSF wiring and IP54 rated construction as standard
- / 5-year on-site warranty*
- / DALI compatible control drivers
- / Flexible Tri-colour (CCT) switching at 3000 / 4000 / 5000k lumens

SKYFALL RANGE

600 x 600mm LED panel luminaire

Combining industry leading backlighting technology with specially made lenses to provide even, shadow-free light dispersal across a wide 170° lens angle.

Housed in a low-profile 32mm casing to allow for seamless installation. This is our Skyfall range of eco-friendly backlit LED panel luminaires. Skyfall features as standard all the benefits of HALO's quality focussed design ethos, combined with a sleek form factor, to make this range of LED panels suitable for installation in any area.

The Skyfall range of eco friendly luminaires is fully URG-19 compliant and comes with a TP(a) prismatic diffuser. It also features safer LSF wiring as standard.

To aid in installing the right setup for any project you can choose from optional variations including: CCT changeable tri-colour lighting ranging between 3000K and 5000K lumens; emergency lighting facility with 3hrs reserve power; and 1-10V dimmable or DALI dimmable drivers.

Complete with HALO's coveted quality pedigree and 5 year warranty* as standard.



- / URG-19 Compliant
- / TP(a) Prismatic Diffuser
- / Includes 5-year on-site warranty*
- / Control gear supplied by Tridonic, a brand leading supplier of LED drivers, gives you maximum responsiveness and fine control over the luminaire
- / Safer LSF wiring as standard
- / Customise for a variety of tasks with a range of optional variations

MOONRAKER RANGE

LED Flood lights

HALO's Moonraker range has landed. Our new floodlight range comes with performance built into the design.

Our new floodlight range comes with performance built into the design. Providing 6000K lumens of crisp white light, powered by energy efficient, longer lasting LEDs, and protected behind shatter resistant tempered glass. Moonraker provides you with a floodlight which can be installed across a variety of environments and at range due to its impressive 700mm prewired LSF leads and IP65 rated housing as standard.

The lightweight frame is easily repositioned while retaining high durability thanks to its die-cast aluminium construction. Combined with its slimline form factor makes for easy handling and transport. For rapid motion response lighting, optional PIR sensors are also available.



- / Can be installed in a variety of environments
- / IP65 rated
- / Customise for a variety of tasks with a range of optional variations
- / Lightweight and durable construction



SPECTRE SINGLE

HALO

IP Rated LED Vapour Proof Single Luminaire



*All products must be registered at haloinnovation.co.uk to qualify for warranty

HALO

SPECTRE SINGLE

FEATURES

- / IP65 and IK08 for all industrial areas of application
- / Tridonic Driver
- / Driver mounting tray for easy maintenance
- / Multiple Link with double wiring
- / Durable isolated power driver
- / Newest generation of SMD2835 0.2W LED chips
- / No UV or IR and completely mercury free
- / L80/B10 @ 50,000 hours
- / 5 year warranty*
- / LSF Wiring

OPTIONS

- / Dimming: ON-OFF / 1-10V / DALI / MS
- / Emergency



APPLICATIONS



1



2



3



4

Commercial & Industrial applications including:

- 1\ Sports facilities, Outdoor & Indoor locations
- 2\ Car Parks & Garages
- 3\ Commercial Buildings and Offices
- 4\ Replacement for fluorescent NCF

*All products must be registered at haloinnovation.co.uk to qualify for warranty

DATA SHEET

| Part No | Description | LED Qty | Lumen Efficacy (Lm/w) | Luminous Flux (LM) |
|-----------------------------------|---|---------|-----------------------|--------------------|
| SPECTRE SINGLE | | | | |
| STR04-30-S-001 | Spectre 30W Vapour proof fitting - 4 foot single | 154 | 125 | 3750 |
| STR05-25-S-001 | Spectre 25W Vapour proof fitting - 5 foot single | 96 | 125 | 3125 |
| STR06-30-S-001 | Spectre 30W Vapour proof fitting - 6 foot single | 168 | 125 | 3750 |
| SPECTRE SINGLE + EMERGENCY | | | | |
| STR04-30-S-001-EM | Spectre 30W Vapour proof fitting - 4 foot single + Emergency | 154 | 125 | 3750 |
| STR05-25-S-001-EM | Spectre 25W Vapour proof fitting - 5 foot single + Emergency | 96 | 125 | 3125 |
| STR06-30-S-001-EM | Spectre 30W Vapour proof fitting - 6 foot single + Emergency | 168 | 125 | 3750 |

TECHNICAL SPECIFICATIONS

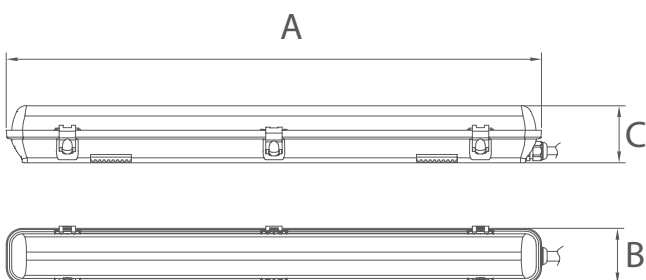
| | |
|-----------------------------|--|
| Colour Index | Ra>80, R9>0 |
| Beam Angle | 120° |
| Protection Class | IP65 / IK08 |
| Colour Temp. | 4000K |
| Dimming Function | On-Off / 1-10V Dimming / Microwave Sensor |
| LED Current | Constant 45mA |
| Input Voltage | AC200-240V/50Hz |
| Working Voltage | Constant DC36-42V |
| Housing Material | Full Plastic |
| Temperature | Operation: -15° to 50°C Storage: -25° to 55°C |
| Colour Consistency in level | Max. 6SDCM |

| | |
|---------------------------------------|----------------------|
| THD | <15% |
| Power Factor | >0.95 |
| Efficiency in | >93% |
| Energy Efficiency Class | A+ / A++ |
| Standard Deviation of Colour Matching | <5 |
| Starting Time | <0.55 |
| Warm-up Time to 60% | <0.55 |
| Rated Nominal Lifetime | >50,000 hours |
| Lumen Maintenance at e.o.l. | >80% |
| LED Device Lifetime | L80/B10@50,000 hours |
| Switching Cycle before Failure | >100,000 times |
| Warranty | 5 years |

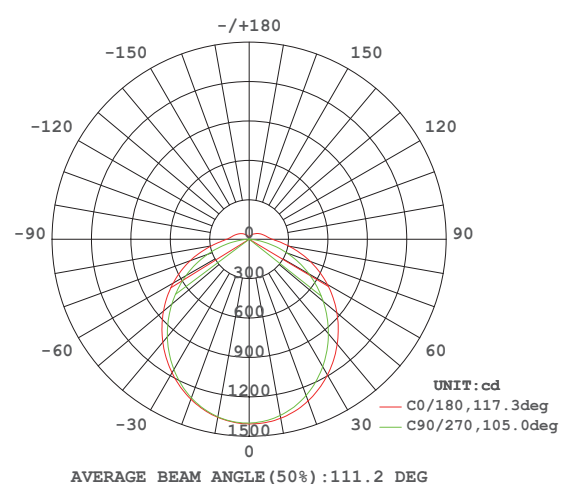


DIMENSIONS

| Model | A (mm) | B (mm) | C (mm) |
|--------------------|--------|--------|--------|
| 120cm / 4ft | 1267 | 68 | 70 |
| 150cm / 5ft | 1567 | 68 | 70 |
| 180cm / 6ft | 1867 | 68 | 70 |



PHOTOMETRY CURVE





SPECTRE TWIN

HALO

IP Rated LED Vapour Proof Twin Luminaire



SAA

UK
CA



*All products must be registered at haloinnovation.co.uk to qualify for warranty

HALO

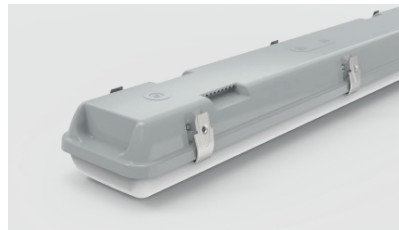
SPECTRE TWIN

FEATURES

- / IP65 waterproof / Dust proof / IK08
- / Tridonic Driver
- / LED driver on tray for easy replacement
- / Multiple Link with double wiring
- / High technology SMD2835 as light source
- / 5 year warranty*
- / LSF Wiring

OPTIONS

- / Dimming: ON-OFF / 1-10V / DALI / MS / EM 3W3H
- / Emergency



APPLICATIONS



1



2



3



4

Commercial & Industrial applications including:








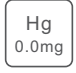



- 1\ Sports facilities, Outdoor & Indoor locations
- 2\ Car Parks & Garages
- 3\ Commercial Buildings and Offices
- 4\ Replacement for fluorescent NCF

*All products must be registered at haloinnovation.co.uk to qualify for warranty

DATA SHEET

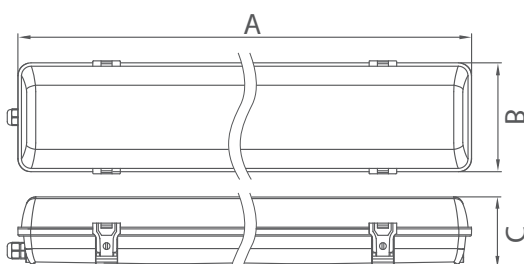
| Part No | Description | LED Qty | Lumen Efficacy (Lm/w) | Luminous Flux (LM) |
|---------------------------------|---|---------|-----------------------|--------------------|
| SPECTRE TWIN | | | | |
| STR04-40-T-001 | Spectre 40W Vapour proof fitting - 4 foot twin | 312 | 125 | 4375 |
| STR05-55-T-001 | Spectre 55W Vapour proof fitting - 5 foot twin | 364 | 125 | 6875 |
| STR06-70-T-001 | Spectre 70W Vapour proof fitting - 6 foot twin | 364 | 125 | 9375 |
| SPECTRE TWIN + EMERGENCY | | | | |
| STR04-40-T-001-EM | Spectre 40W Vapour proof fitting - 4 foot twin + Emergency | 312 | 125 | 4375 |
| STR05-55-T-001-EM | Spectre 55W Vapour proof fitting - 5 foot twin + Emergency | 364 | 125 | 6875 |
| STR06-70-T-001-EM | Spectre 70W Vapour proof fitting - 6 foot twin + Emergency | 364 | 125 | 9375 |

TECHNICAL SPECIFICATIONS

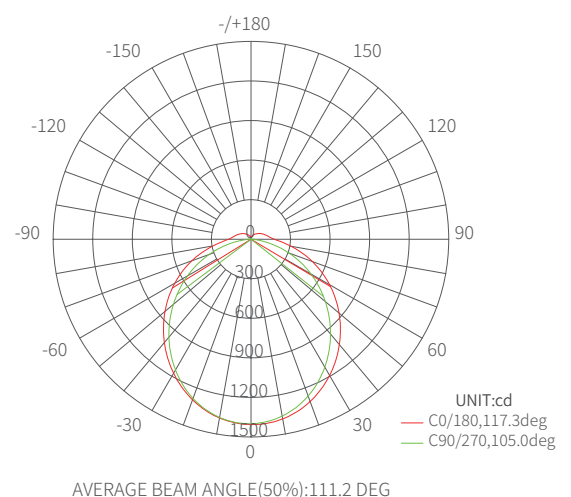
| | | | | | | |
|------------------------------------|--|--|----------------------|---|---|---|
| Colour Index | Ra>80, R9>0 | THD | <15% |  |  |  |
| Beam Angle | 120° | Power Factor | >0.95 |  |  |  |
| Protection Class | IP65 / IK08 | Efficiency in | >93% |  |  |  |
| Colour Temp. | Tri-Colour (CCT): 3000/5000K Mixed: 4000K | Energy Efficiency Class | A+ / A++ |  |  | |
| Dimming Function | On-Off / 1-10V Dimming / Microwave Sensor | Standard Deviation of Colour Matching | <5 | Starting Time | <0.55 | |
| LED Current | Constant 45mA | Warm-up Time to 60% | <0.55 | Rated Nominal Lifetime | >50,000 hours | |
| Input Voltage | AC200-240V/50Hz | Lumen Maintenance at e.o.l. | >80% | Lumen Maintenance at e.o.l. | >80% | |
| Working Voltage | Constant DC36-42V | LED Device Lifetime | L80/B10@50,000 hours | Switching Cycle before Failure | >100,000 times | |
| Housing Material | Full Plastic | Warranty | 5 years | | | |
| Temperature | Operation: -15° to 50°C Storage: -25° to 55°C | | | | | |
| Colour Consistency in level | Max. 6SDCM | | | | | |

DIMENSIONS

| Model | A (mm) | B (mm) | C (mm) |
|--------------------|--------|--------|--------|
| 120cm / 4ft | 1280 | 115 | 72 |
| 150cm / 5ft | 1580 | 115 | 72 |
| 180cm / 6ft | 1880 | 115 | 72 |



PHOTOMETRY CURVE





SOLACE

HALO

LED Narrow Batten Luminaire

Replacement for T8/T5 Fluorescent Batten Luminaire



*All products must be registered at haloinnovation.co.uk to qualify for warranty

SOLACE

FEATURES

- / Linear design as fluorescent batten
- / End or rear cable entry
- / Multiple link through end hole
- / High Lux Output
- / Unique and modern uncompromised LED liquid strip
- / 5 year warranty*
- / LSF wiring

OPTIONS

- / Dimming: ON-OFF / 1-10V / DALI
- / Emergency

APPLICATIONS

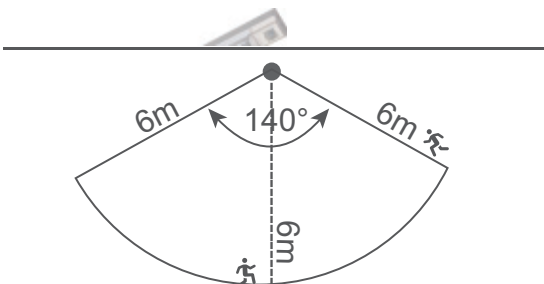
- / Replacement for T8/T5 fluorescent batten
- / Commercial, Industrial & Residential



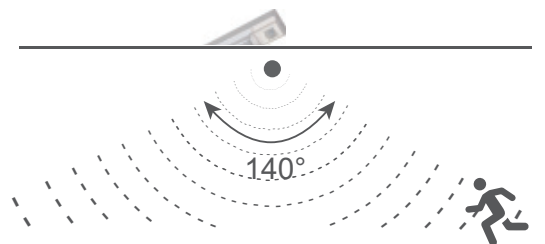
DATA SHEET

| Part No | Description | LED Qty | Lumen Efficacy (Lm/w) | Luminous Flux (LM) |
|--------------------------------|---|---------|-----------------------|--------------------|
| SOLACE | | | | |
| SL04-32PN1-SNN1B-001 | Solace 32W LED Batten - 4 foot twin | 156 | 120 | 3850 |
| SL05-28PN1-SNN1B-001 | Solace 28W LED Batten - 5 foot twin | 195 | 120 | 3350 |
| SL06-32PN1-SNN1B-001 | Solace 32W LED Batten - 6 foot twin | 234 | 120 | 3850 |
| SOLACE + EMERGENCY | | | | |
| SL04-32PN1-SNN1B-001-EM | Solace 32W LED Batten - 4 foot twin + Emergency | 156 | 120 | 3850 |
| SL05-28PN1-SNN1B-001-EM | Solace 28W LED Batten - 5 foot twin + Emergency | 195 | 120 | 3350 |
| SL06-32PN1-SNN1B-001-EM | Solace 32W LED Batten - 6 foot twin + Emergency | 234 | 120 | 3850 |

SENSING ANGLE



SENSING DISTANCE



*All products must be registered at haloinnovation.co.uk to qualify for warranty

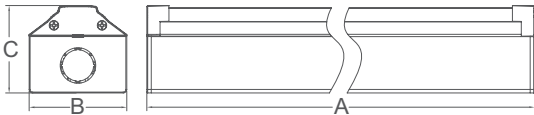
TECHNICAL SPECIFICATIONS

| | | | |
|-------------------------|-------------------------|---------------------------------------|--|
| Colour Index | Ra>80 | Temperature | Operation: -15° to 50°C Storage: -25° to 55°C |
| Colour Temp. | 4000K | Lumen Maintenance @6000 hours. | >80% |
| Beam Angle | 80° | Switching Cycle before Failure | >100,000 times |
| Dimming Function | On-Off or 1-10V Dimming | Lifespan | 50,000 hours |
| Power Factor | >0.95 | Energy Efficiency Class | A+ / A++ |
| LED Current | Constant 45mA | Colour Consistency in level | Max. 6SDCM |
| Input Voltage | AC200-240V/50Hz | THD | <15% |
| Working Voltage | Constant DC36-42V | Warranty | 5 years |
| Housing Material | Aluminium + PC | | |
| Starting Time | <0.5S | | |
| Protection Class | IP20 | | |

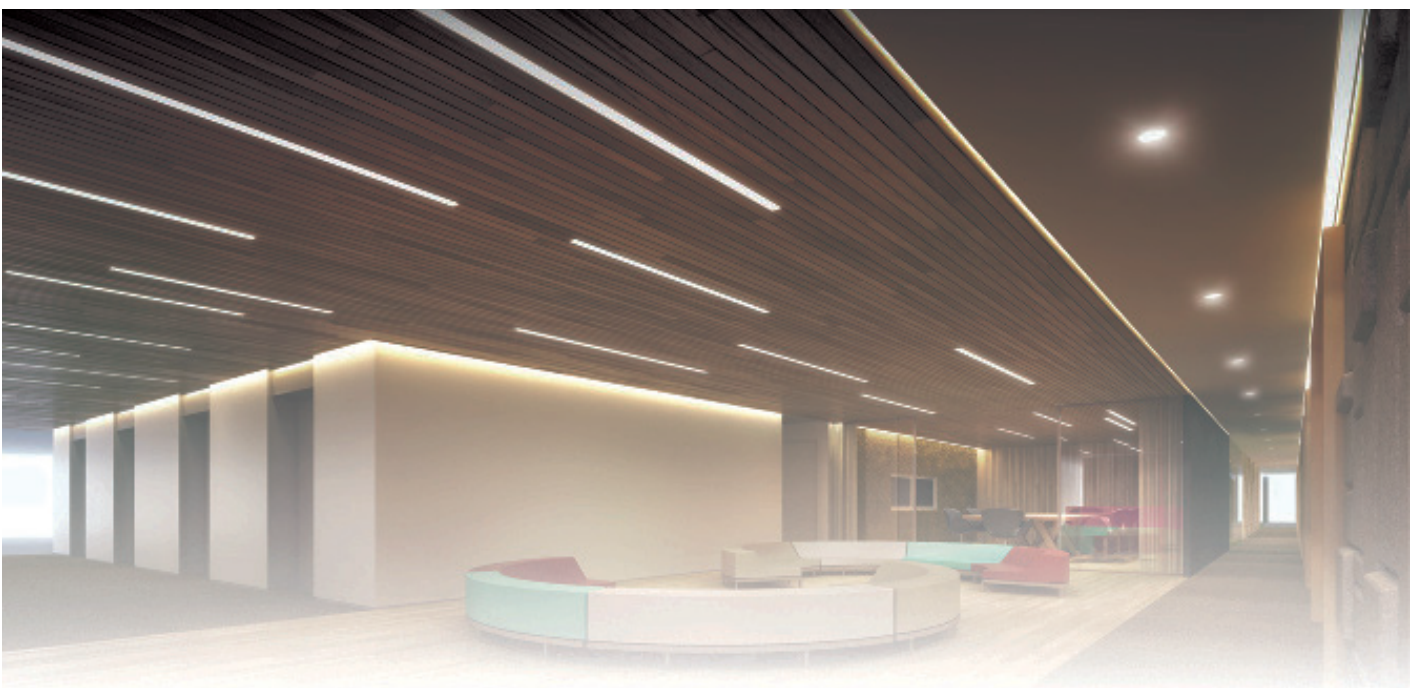
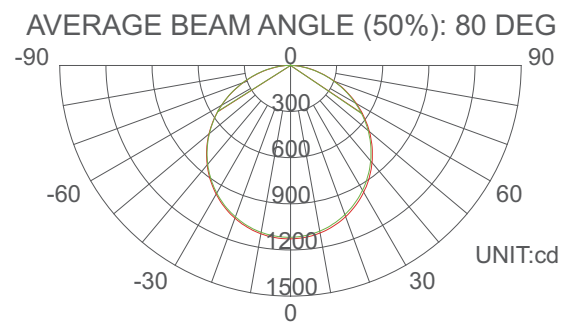


DIMENSIONS

| Model | A (mm) | B (mm) | C (mm) |
|--------------------|--------|--------|--------|
| 120cm / 4ft | 1205 | 55 | 50 |
| 150cm / 5ft | 1505 | 55 | 50 |
| 180cm / 6ft | 1805 | 55 | 50 |



PHOTOMETRY CURVE





THUNDERBALL

HALO

2D LED Circular Luminaire

IP65 D320



*All products must be registered at haloinnovation.co.uk to qualify for warranty

THUNDERBALL

FEATURES

- / Durable IP65 rated case
- / Multiple function on EM / MS
- / Best replacement for 2D CCFL
- / 3H EM at 10% lumen output
- / Single colour or Tri-colour (CCT)
- / 5 year warranty*
- / LSF Wiring

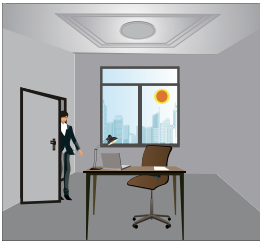
OPTIONS

- / Microwave sensor: 0% or 10%
- / Emergency: 3 hours with 10% lumen
- / DALI dimmable drivers

APPLICATIONS

- / Replacement for 2D fluorescent
- / Commercial, Industrial & Residential

MICROWAVE SENSOR



With sufficient ambient light, the sensor does not switch on the lamp.



With insufficient ambient light, the sensor switches on the lamp when motion is detected.



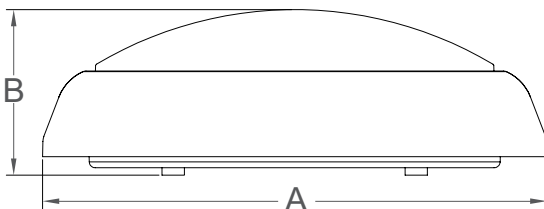
After hold time, the sensor dims the lamp at a low light level if no new motion is detected.



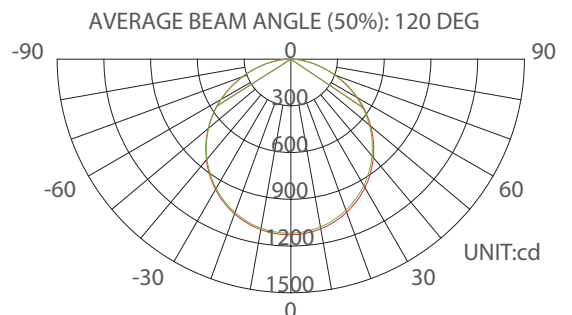
After stand-by period, the sensor switches off the lamp if no motion is detected in its detection zone.

DIMENSIONS

| Model | A (mm) | B (mm) |
|--------------------|--------|--------|
| 2D Bulkhead | Ø 325 | 113 |



PHOTOMETRY CURVE












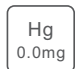

*All products must be registered at haloinnovation.co.uk to qualify for warranty



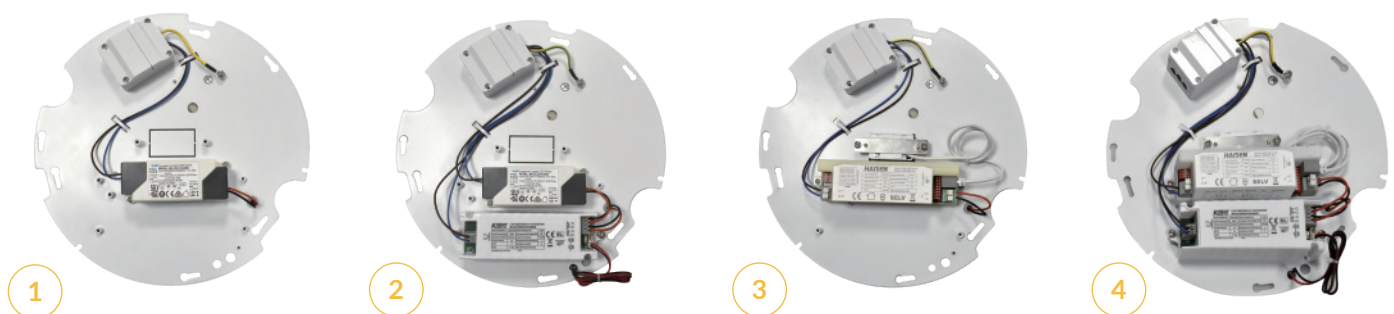
DATA SHEET

| Part No | Description | LED Qty | Lumen Efficacy (Lm/w) | Luminous Flux (LM) |
|--------------------------------|--|---------|-----------------------|--------------------|
| THUNDERBALL | | | | |
| TB32-12GTR-MNF | Thunderball 12W 2D LED Bulkhead | 72 x 2 | 100 | 1200 |
| TB32-12GTR-MNF-MW | Thunderball 12W 2D LED Bulkhead + Microwave Sensor | 72 x 2 | 100 | 1200 |
| THUNDERBALL + EMERGENCY | | | | |
| TB32-12GTR-MNF-MW-EM | Thunderball 12W 2D LED Bulkhead + Microwave Sensor + Emergency | 72 x 2 | 100 | 1200 |
| TB32-12GTR-MNF-EM | Thunderball 12W 2D LED Bulkhead + Emergency | 72 x 2 | 100 | 1200 |

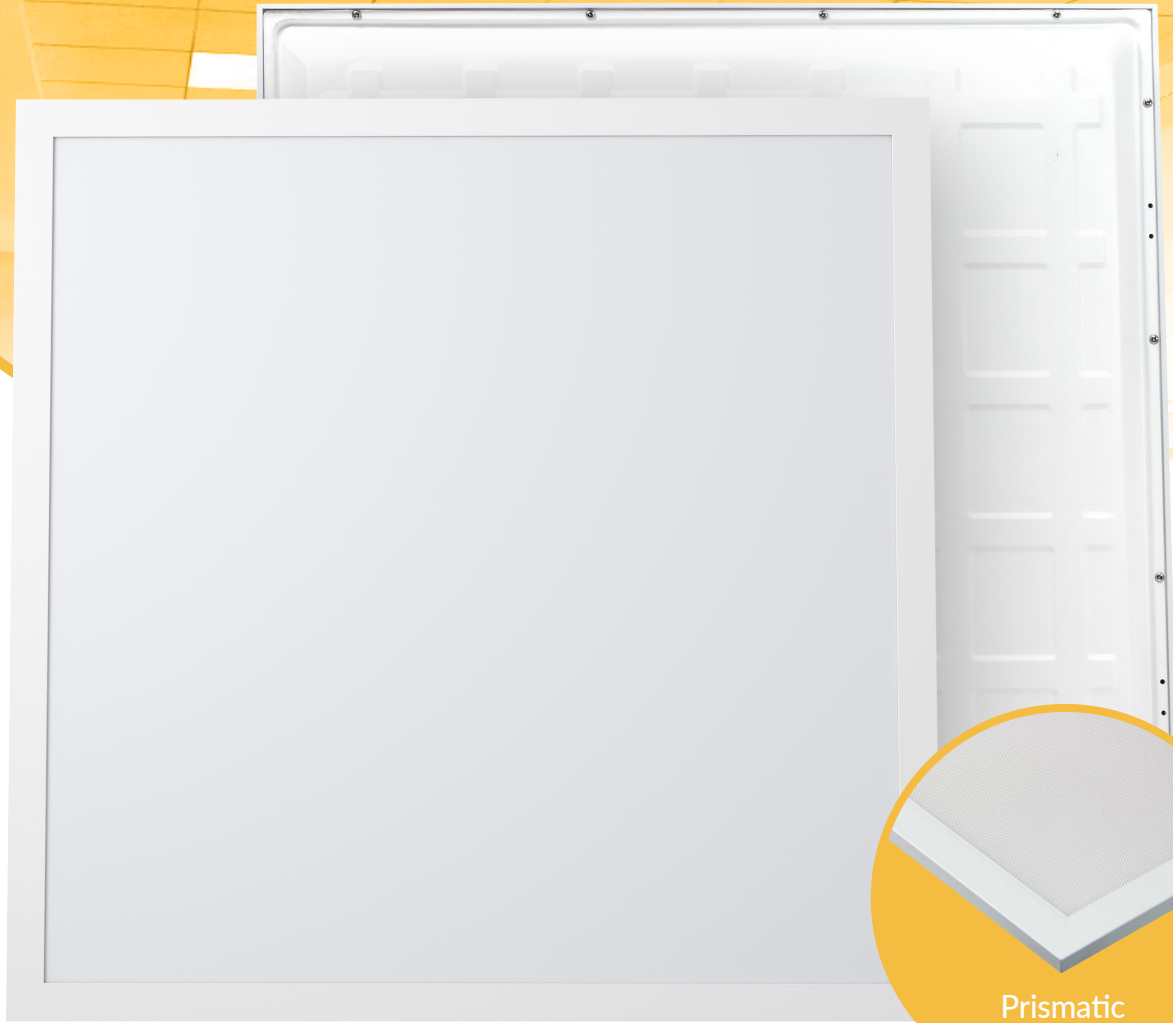
TECHNICAL SPECIFICATIONS

| | | | | | | |
|----------------------------------|--|---------------------------------------|--|---|---|--|
| Colour Index | Ra>80 | Input Voltage | AC200-240V 50/60Hz |  |  |  |
| Colour Temp. | Single Colour: 3000K, 4000K, 5000K & 6000K or Tri-colour (CCT): 3000/6000K, Mixed: 4500K | Working Voltage | Constant DC36-42V |  |  |  |
| Function | F1: STD F2: STD+EMG F3: STD+MS F4: STD+EMG+MS | Protection Class | IP65 |  |  |  |
| Temperature | Operation: -15° to 50°C Storage: -25° to 55°C | Temperature | Operation: -15° to 50°C Storage: -25° to 55°C |  |  | |
| Function | F1: STD F2: STD+EMG F3: STD+MS F4: STD+EMG+MS | Lifespan | 30,000 hours | | | |
| Microwave Sensor Function | 0% or 10% lumen on Microwave sensor | Energy Efficiency Class | A+ / A++ | | | |
| Emergency Function | 3 hour emergency / 140lm | Colour Consistency in level | Max. 6SDCM | | | |
| Flicker | Flicker free | Starting Time | <0.5S | | | |
| Power Factor | >0.95 | THD | <15% | | | |
| LED Current | Constant 50mA | Switching Cycle before Failure | >100,000 times | | | |
| | | Warranty | 5 years | | | |

VARIATIONS



- 1\ Standard
- 2\ Standard + 3h Emergency
- 3\ Standard+ Microwave
- 4\ Standard + 3h Emergency + Microwave



Prismatic
Diffuser

SKYFALL

HALO

600 x 600 LED Panel

TP(a) & Prismatic UGR<19



SAA

UK
CA



*All products must be registered at haloinnovation.co.uk to qualify for warranty

SKYFALL

FEATURES

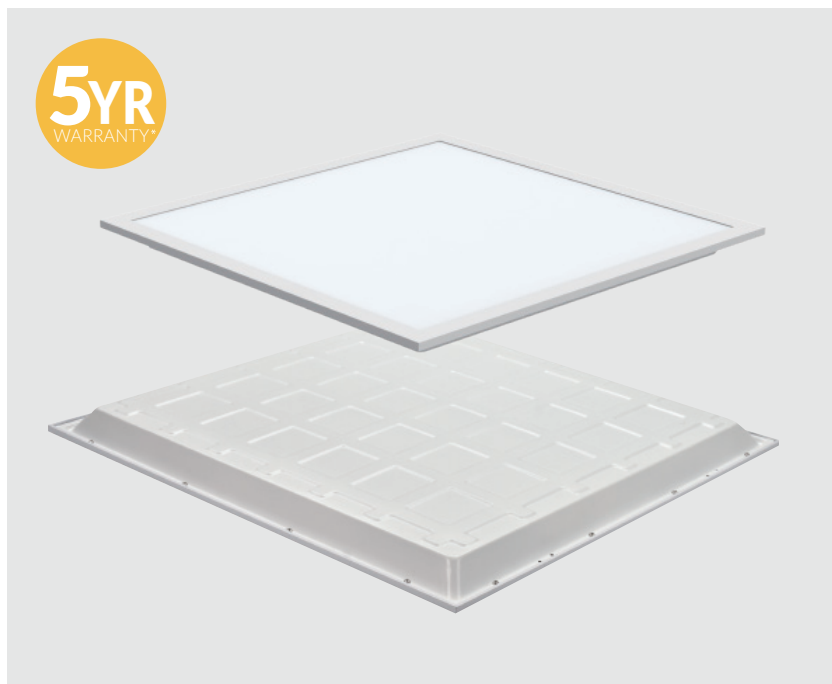
- / Uniquely designed ultra flat casing: 32mm
- / 170° lens on PCB for uniform lighting
- / Newest generation of SMD2835 0.2W LED chips
- / UGR-19 Compliant
- / TP(a) Prismatic Diffuser
- / Tridonic flicker free driver
- / 5 year warranty*
- / LSF Wiring

OPTIONS

- / Emergency 3W/3H
- / DALI dimmable drivers

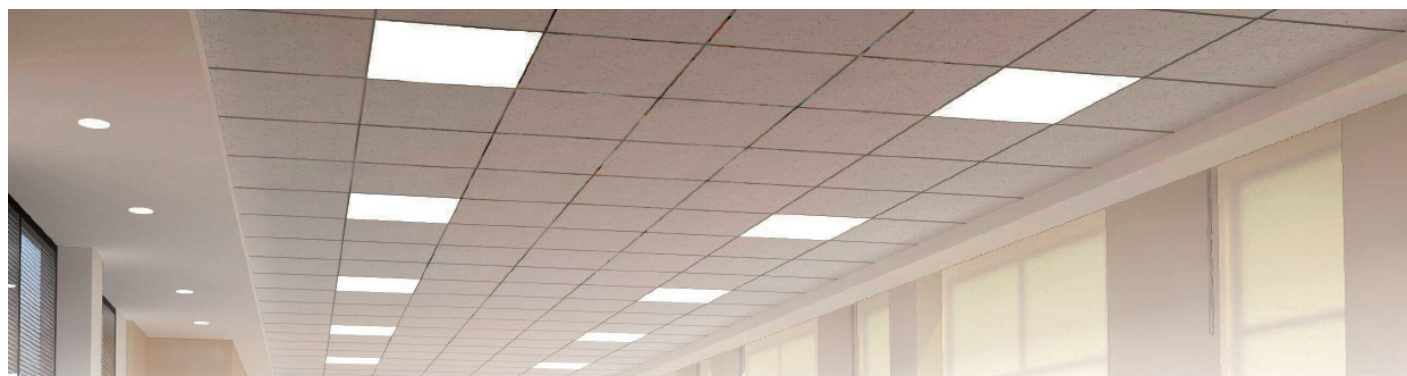
APPLICATIONS

- / Replacement for fluorescent layin module
- / Offices / Schools
- / Hospitals / Retail
- / Corridors / Stairwells



DATA SHEET

| Part No | Description | LED Qty | Lumen Efficacy (Lm/w) | Luminous Flux (LM) |
|---------------------------------|--|---------|-----------------------|--------------------|
| SKYFALL | | | | |
| SKY22-40SN1-BTN1T-001 | Skyfall 40W LED Backlit panel 600 x 600 TPA UGR-19 | 48 | 105 | 3150 |
| SKYFALL + EMERGENCY | | | | |
| SKY22-40SN1-BTN1T-001-EM | Skyfall 40W LED Backlit panel 600 x 600 TPA UGR-19 + Emergency | 48 | 105 | 3150 |

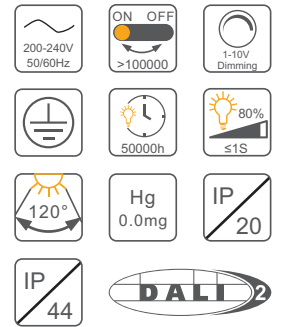


*All products must be registered at haloinnovation.co.uk to qualify for warranty

TECHNICAL SPECIFICATIONS

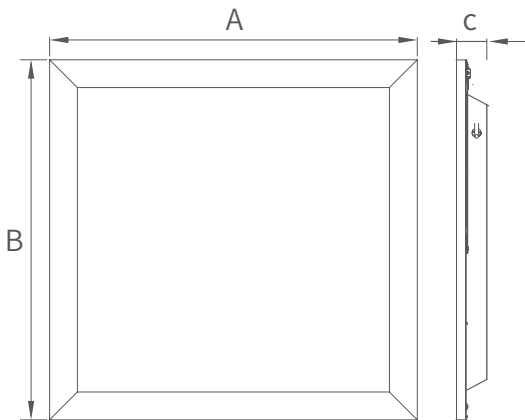
| | |
|-------------------------|--|
| UGR Data | UGR<19 |
| Colour Index | Ra>80 |
| Colour Temp. | 4000K |
| Dimming Function | On-Off / 1-10V Dimming / DALI |
| Flicker Free | Tridonic |
| LED Current | Constant 60mA |
| Input Voltage | AC200-240V/50Hz |
| Working Voltage | Constant DC27-42V |
| Protection Class | IP20/IP44 Optional |
| Temperature | Operation: -15° to 50°C Storage: -25° to 55°C |
| Lifespan | 50,000 hours |

| | |
|--|-------------------------------|
| Switching Cycle before Failure | >100,000 times |
| Power factor | >0.9 |
| Efficiency in | >88% |
| Energy Efficiency Class | A+ / A++ |
| Standard deviation of colour matching | <5 |
| Starting Time | <0.1S |
| Warm-up time to 60% | <0.5S |
| Driver MTBF | 500,000H.MIL-HDBK-217F (25°C) |
| Lumen Maintenance at e.o.l. | >70% |
| Warranty | 5 years |

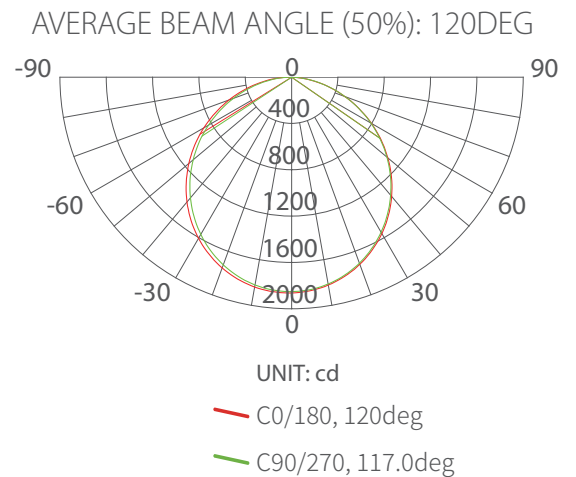


DIMENSIONS

| Model | A (mm) | B (mm) | C (mm) |
|------------------|--------|--------|--------|
| 600 x 600 | 595 | 595 | 32 |



PHOTOMETRY CURVE





MOONRAKER

HALO

LED Floodlight Range



*All products must be registered at haloinnovation.co.uk to qualify for warranty

MOONRAKER

FEATURES

- / Die-casting aluminium and tempered glass
- / Slimline design
- / IP65
- / 6000K Cool White colouring
- / 700mm extended leads for easier installation
- / Replacement for tungsten halogen bulbs
- / 5 year warranty*
- / LSF Wiring



OPTIONS

- / PIR versions available

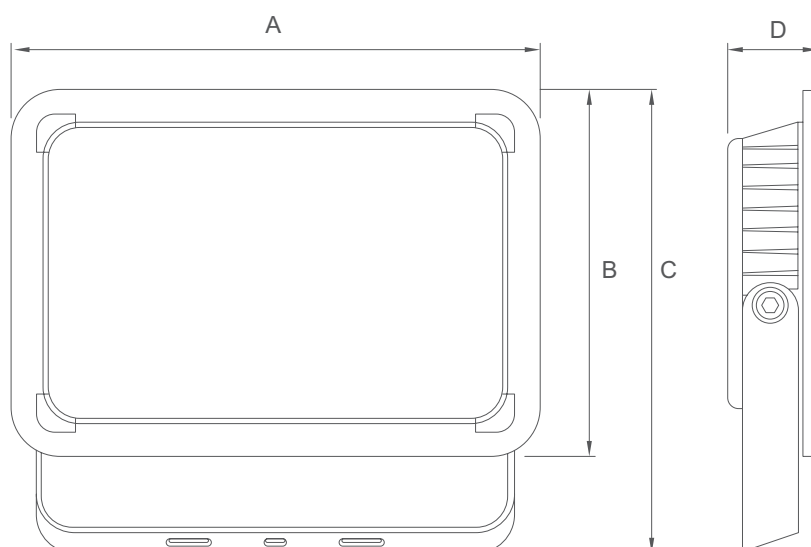
APPLICATIONS

- / Factories / Warehouses
- / Supermarkets
- / Exhibition halls
- / Exterior lighting



DIMENSIONS

| Model | A (mm) | B (mm) | C (mm) | D (mm) |
|-------------|--------|--------|--------|--------|
| 10W | 115 | 80 | 102 | 25 |
| 20W | 150 | 104 | 133 | 29 |
| 30W | 180 | 125 | 157 | 32 |
| 50W | 233 | 160 | 205 | 40 |
| 100W | 318 | 227 | 280 | 53 |
| 150W | 380 | 266 | 324 | 55 |
| 200W | 460 | 321 | 387 | 55 |



*All products must be registered at haloinnovation.co.uk to qualify for warranty

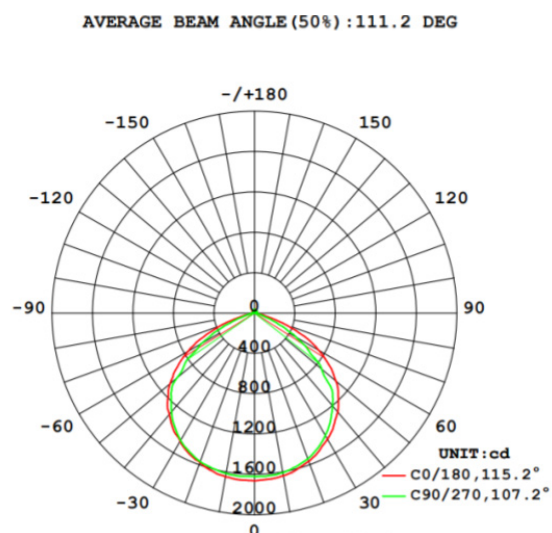
DATA SHEET

| Part No | Description | Power Consumption (W) | Lumen Efficacy (Lm/w) | Luminous Flux (LM) |
|------------------------|---------------------------------|-----------------------|-----------------------|--------------------|
| MOONRAKER | | | | |
| MOON10W | Moonraker 10W Flood light | 10 | 90 | 900 |
| MOON20W | Moonraker 20W Flood light | 20 | 90 | 1800 |
| MOON30W | Moonraker 30W Flood light | 30 | 90 | 2700 |
| MOON50W | Moonraker 50W Flood light | 50 | 90 | 4500 |
| MOON100W | Moonraker 100W Flood light | 100 | 90 | 9000 |
| MOON150W | Moonraker 150W Flood light | 150 | 90 | 13500 |
| MOON200W | Moonraker 200W Flood light | 200 | 90 | 18000 |
| MOONRAKER + PIR | | | | |
| MOON10WPIR | Moonraker 10W Flood light + PIR | 10 | 90 | 900 |
| MOON20WPIR | Moonraker 20W Flood light + PIR | 20 | 90 | 1800 |
| MOON30WPIR | Moonraker 30W Flood light + PIR | 30 | 90 | 2700 |
| MOON50WPIR | Moonraker 50W Flood light + PIR | 50 | 90 | 4500 |

TECHNICAL SPECIFICATIONS

| | | | |
|---------------------------------------|------------------|--------------------------------|--------------|
| Housing Colour | Black | Lead Length | 700mm |
| Power Rating | AC 200-240V 50Hz | Beam Angle | 120° |
| Colour Temp. | 6000K | Lifespan | 35,000 hours |
| Protection Class | IP65 | CRI | 80 |
| Switching Cycle before Failure | >100,000 times | Lifespan | 50,000 hours |
| Temperature | -20° to 45°C | Energy Efficiency Class | A+ / A++ |
| | | Warranty | 5 years |

PHOTOMETRY CURVE





HALO

haloinnovation.co.uk